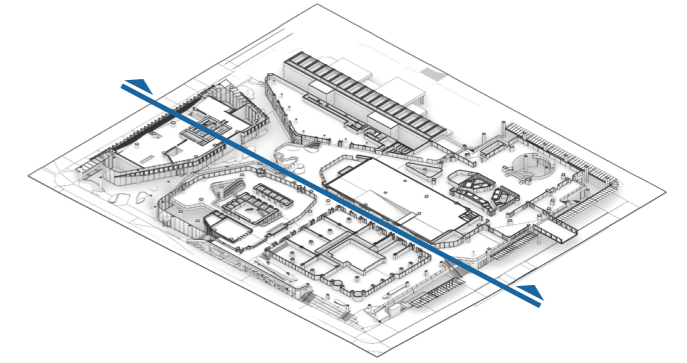


2.3 Site Sections

East-West 3D Section



2.4 Te Urunga Hau / The Urban Room

Pātukituki ana te manawa o Tāmaki
E pupū ake ana i te ihi o te whenua
Kapakapatau ana te hapori i ōna rau
tuku iho
He pūtahitanga nō Te Urunga Hau

The beating heart of Tāmaki, drawn from the vitality within the land, augmented by the life of its communities, and bound by the encompassing winds.

The name, Te Urunga Hau, builds on the vision for Te Pūmanawa o Tāmaki. Urunga can be literally interpreted as an arrival place, landing or destination, while hau is both the winds, and a metaphor for communities.

Reclaiming and acknowledging the past, the design recalls the natural landscape of Auckland's historic shoreline to celebrate the vital connection between land and harbour, while creating a diverse and engaging ground scape to host public occupation, social infrastructure, community and commercial activation.

Conceptually, the space remains consistent with the overarching concept of Whakairo (to eat away), where the lower levels and ground plane are metaphorically 'carved by water' from the podium mass resulting in a dynamic public space enriched with both man-made forms and patterns (carved by hand) and natural interventions.

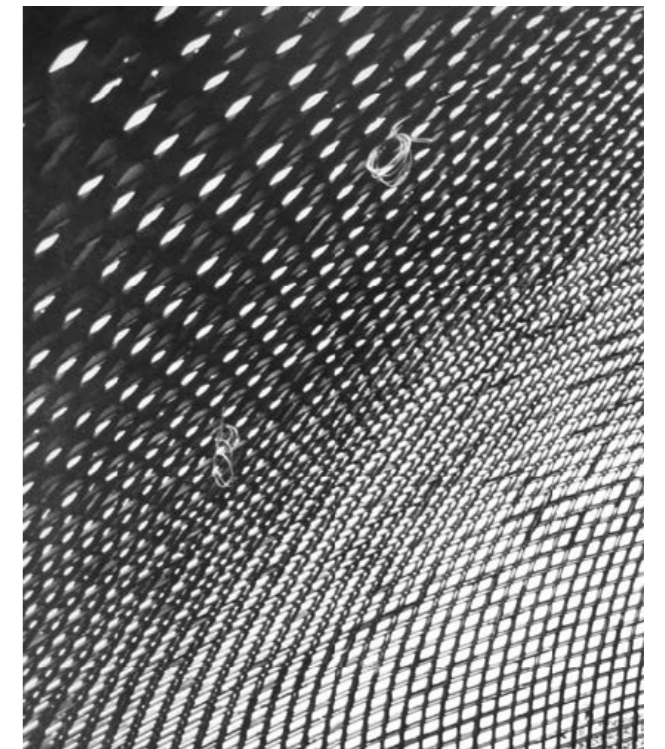
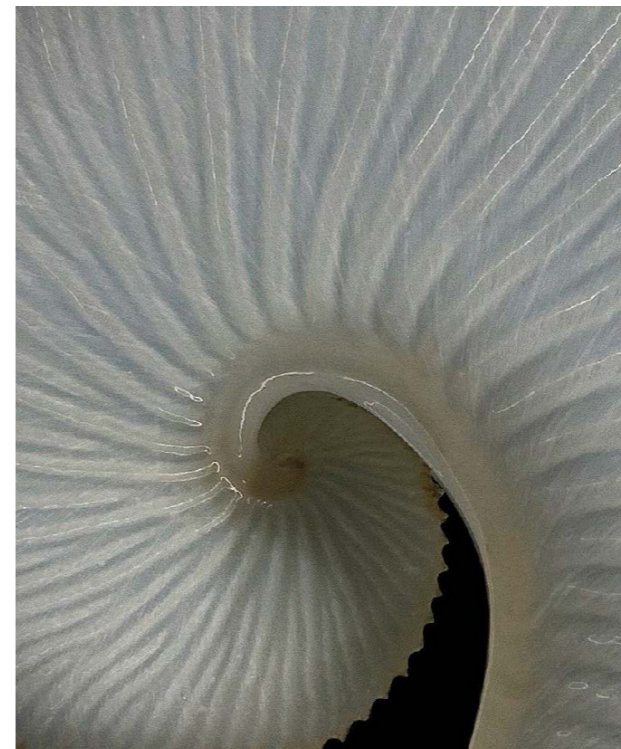
Vegetation inhabits edges that are 'carved' from the podium, letting nature in and providing shelter, texture and a human scale that softens the built form.

The texture of the Te Urunga Hau space has been inspired by the skin of the pūpūtarakihi, the paper nautilus shell whose natural process of being blown ashore catalysed the prophesy that subsequently led to the tuku whenua (provision of land) by Ngāti Whātua Ōrākei paramount chief, Apihai Te Kawau, which enabled the establishment of Auckland City.

↖ Maitemata Sandstone cliffs, Auckland, NZ



↖ The pūpūtarakihi nautilus shell



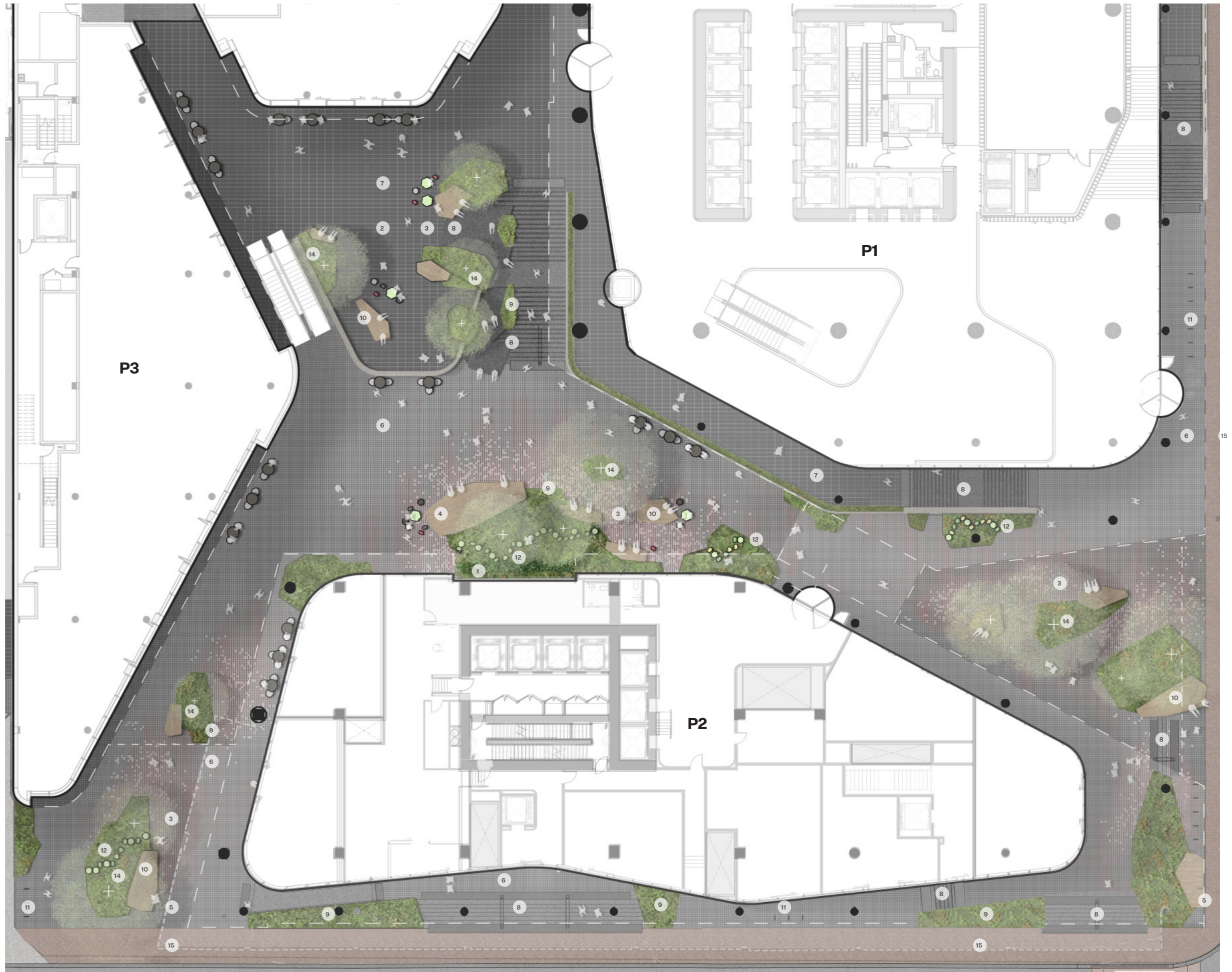


2.4 Te Urunga Hau / The Urban Room

Landscape Plan

0m 5m 10m
 1:300 @ A3

- Green wall 1
- Programmable Space 2
- Dwell space - Informal Seating 3
- Stage & Gathering Point 4
- Street Threshold Dwell Spaces 5
- P01 Stone Paving 6
- P02 Stone Paving 7
- S01/S02 Seating Terraces & Steps 8
- S03 Planters 9
- F01 Seating 10
- F04 Cycle Parking - City Centre Narrow Hoop - 22 Hoops/44 spaces 11
- F06 Play Trail 12
- F07 Play Nooks / Eroded Wall Feature 13
- Native Tree - Nom. 400L/1000L specimen 14
- Existing Footpath 15



2.4 Te Urunga Hau / The Urban Room

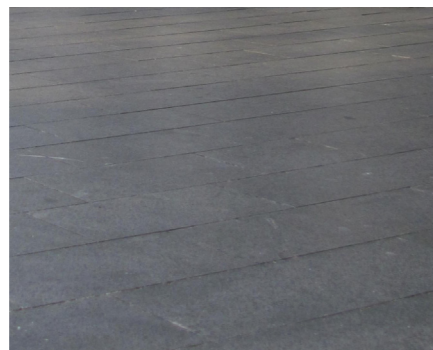
Landscape Materiality

P01 Stone Paving
Te Urunga Hau



150 x 150 x 80mm granite setts, stack bond. PT Black double flamed finish with highlights of Red Porphyry, Type B & G654 bush hammered around dwelling places.

P02 Stone Paving
Podium Laneways



300 x 600 x 50mm granite pavers, stack bond. PT Black double flamed finish with Type B marker pavers subject to detailed design. Pavers laid on pedestals.

S01 Stone Steps



Typ. 350 x 150mm stone step units, PT Black granite with double flamed finish to top face and honed finish to front face. 90mm G623 granite contrasting inlay to leading edge.

S02 Stone Bleachers



Nom. 75mm deep horizontal stone terrace units with brick clad vertical faces to architecture specification. PT Black granite with double flamed finish.

S03 Planters



5mm thick steel sheet cladding fixed to insitu concrete or block work upstands forming planter. All planters to include drainage and irrigation connections.

F01 Seating



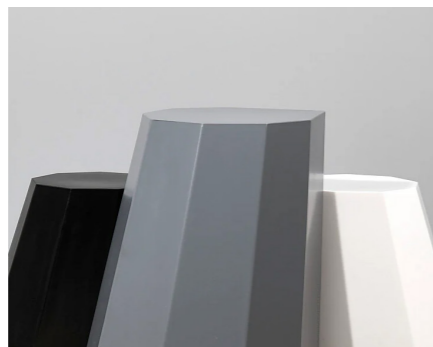
100 x 100 to 300mm timber battens/boards, gauged and oiled finished, fixed with stainless steel frame to precast concrete or stone clad base subject to detailed design and engagement.

F02 Flexible Seating
Te Urunga Hau



Bespoke stool unit to be fabricated in timber and steel forms with high density rubber feet. Steel units to be galvanised and powdercoated in a range of colours TBC. Final design subject to detailed design and engagement.

F03 Flexible Tables
Te Urunga Hau



Bespoke table unit to be fabricated in timber and steel forms with high density rubber feet. Steel units to be galvanised and powdercoated in a range of colours TBC. Final design subject to detailed design and engagement.

F04 Cycle Hoops



Auckland city centre standard bead blasted stainless steel cycle hoop with horizontal cross panel featuring 'PAHIKARA' text laser cut from cross panel

F05 Handrails



50 x 25 x 3mm stainless steel RHS handrail with 50 x 25 x 3mm posts. Double rail to form loop. Where required intermediate posts to have 100 x 25 x 15mm flat section between post and rail. Bead blasted finish.

F06 Play Trail



Shaped hardwood, precast concrete and steel clad stepping posts, balance beams. Allow for integrated lighting, painted finishes to timber and steel, patterned finished to concrete and steel.

F07 Play Nooks



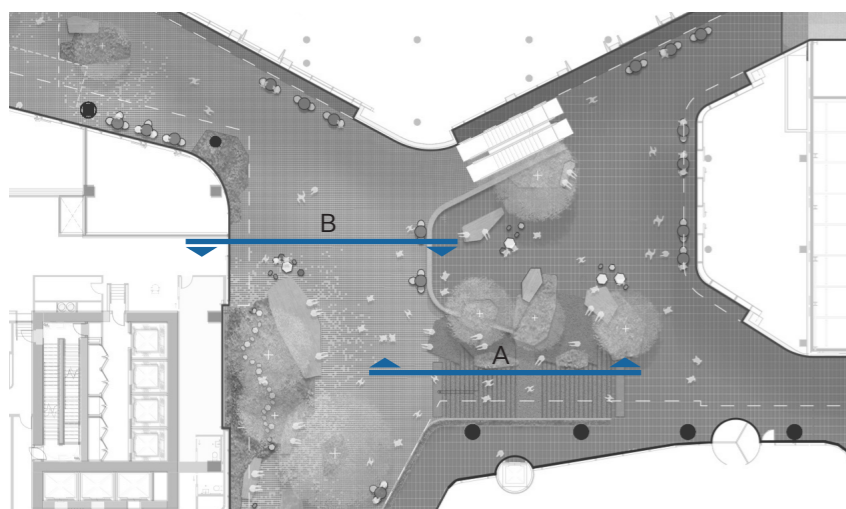
Shaped recess with brick wall providing for sitting, sliding and climbing opportunities. Steel forms to be galvanised and painted, allow for wet pour recycled rubber layer subject to detailed design.

2.4 Te Urunga Hau / The Urban Room

Vegetation acts as key organising elements within Te Urunga Hau. Together with informal seating, a flexible 'stage' and perch-able terraces it defines and shelters a range of edge experiences or dwelling opportunities around an open central area of convergence.

A deliberate 'moment' at the intersecting flows of movement from the laneways which is visually anchored by a large green wall that serves as both focal and backdrop to the space and as a edge for public occupation. The choice of edge and seating conditions enables the space to be activated and occupied in a variety of ways including individual and group use, 'on show', along 'sheltered edges' or along activated building edges.

A programmable space to the upper level offers the opportunity to curate and invite new uses into the space. The urban room will have the ability to support activity through different times of the day and week, through the everyday to an event day providing for an experience that is not static or always the same but informed by the public life that the space provides for. A convergence of public life that can be shaped by the residents and visitors to Pumanawa.



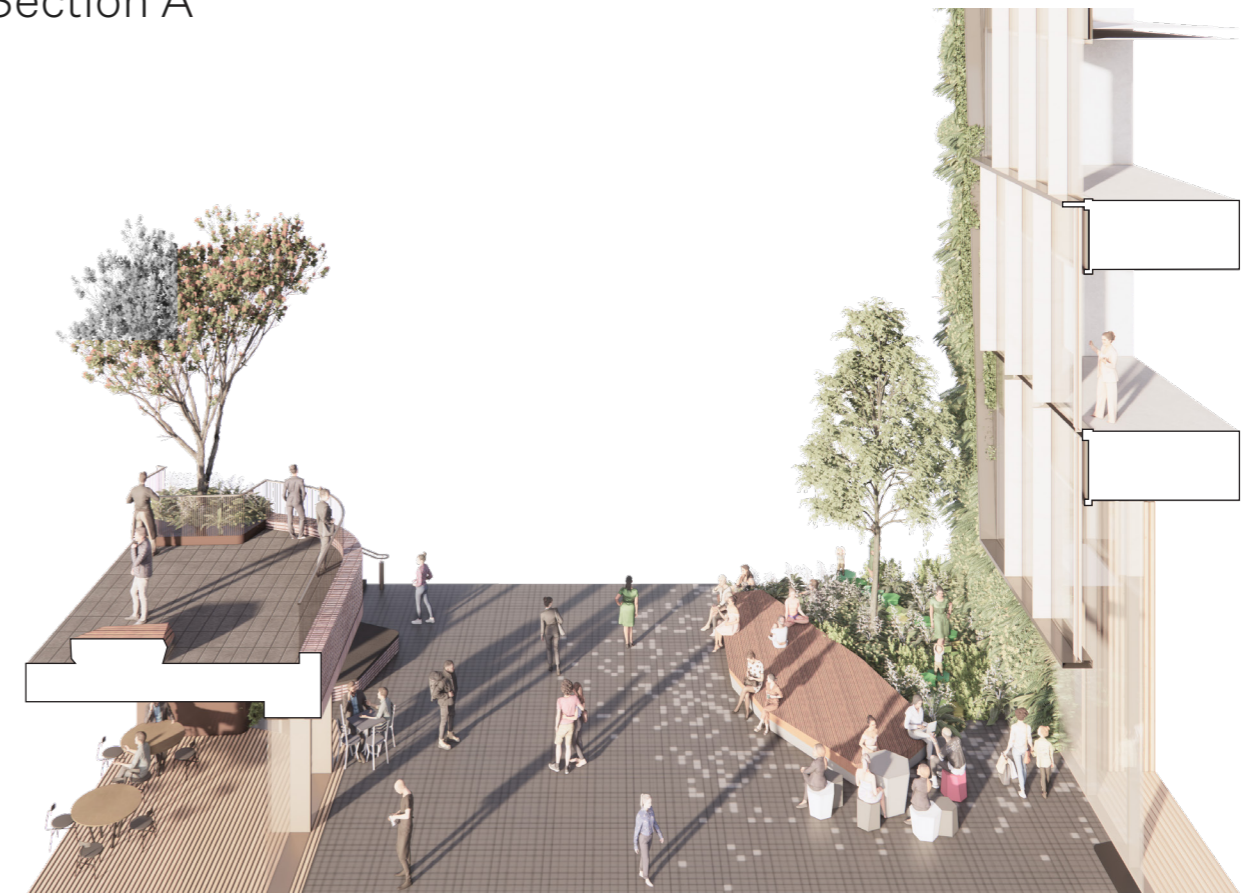
Further Detail:

Refer to Document A (Architecture and Landscape Drawings) for further detail including annotated sections



Typ. 4900 2400 Typ. 4900

Section A



Nom. 8500 Nom. 6850

Section B

2.4 Te Urunga Hau / The Urban Room

Planting Strategy

The soft landscape strategy aims to reflect the transition of vegetation associated with the natural coastal condition of the whenua. Moving through a transection from the coastal forest and headland to the south of the site and across the original foreshore, out into the intertidal zone to the north where flats and rock shelves may originally existed.

By varying the species used along a journey across the site, the original landscape and context of the site will become legible, helping to orientate and connect to qualities of place.

This approach also provides a palette of species well suited to the variety of environmental conditions present and the sometimes exposed nature of the sites waterfront location.



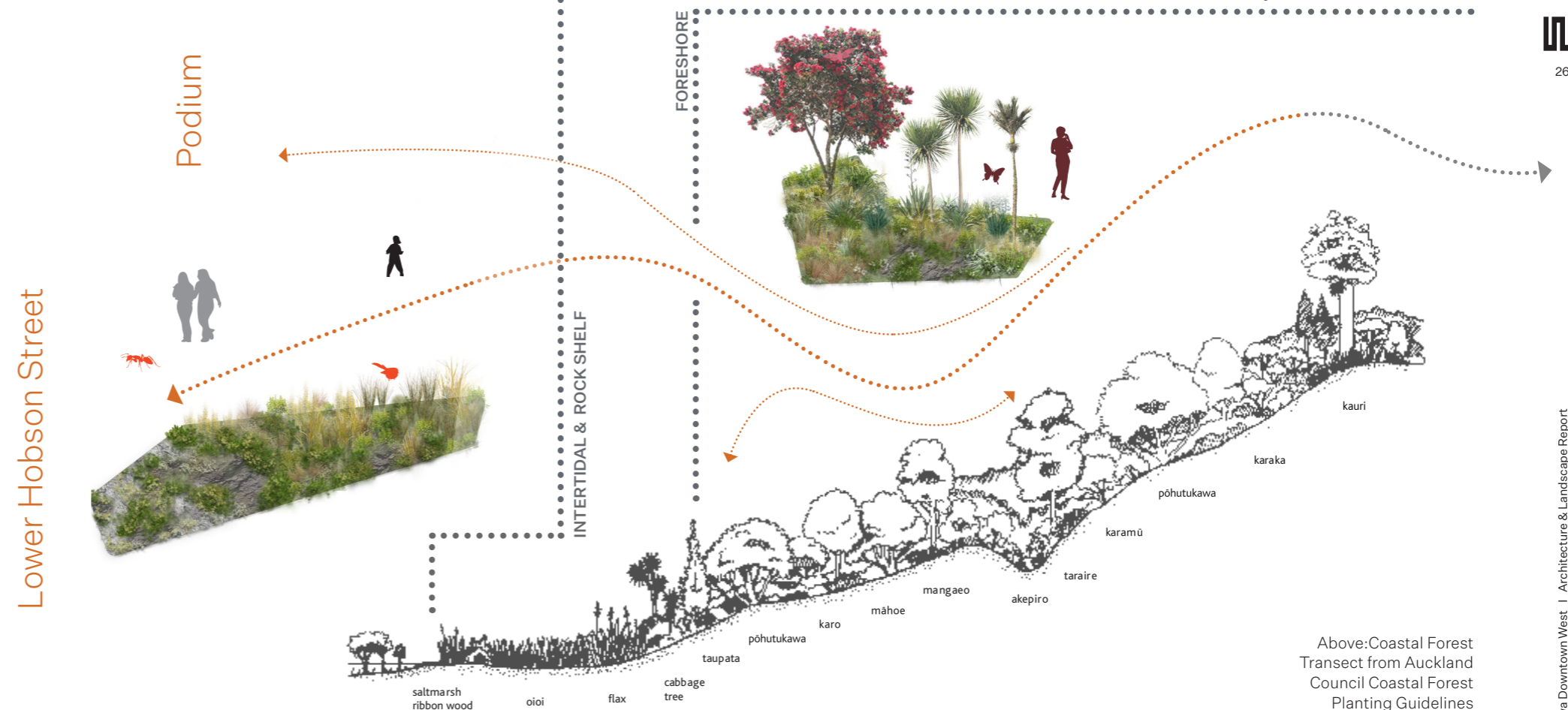
Outline Specification

All trees to be planted in structural tree pits of min. 6m³ soil volume per tree with arbor green stratcells/stratavault and 50mm drainage cell and SW connection to base of tree pit. All trees to be anchored with timber straining frames, stainless steel wires and eye bolts. Each tree to include 2No. 60mm aeration / watering tubes per tree with SS grate over Growing media to be nom. Dalton's Queen Street mix.

Structural garden beds and planters on podium for shrub and groundcover planting to include min. 450mm deep growing media, nom. Dalton's Garden Mix. Mulch for understory planting to be 75mm Living Earth 'More than Mulch' Allow up to 6no. plants per m² grades vary between 5Litre and 15Litre.

Green wall to be modular felt pocket system with integrated hydroponic watering system.

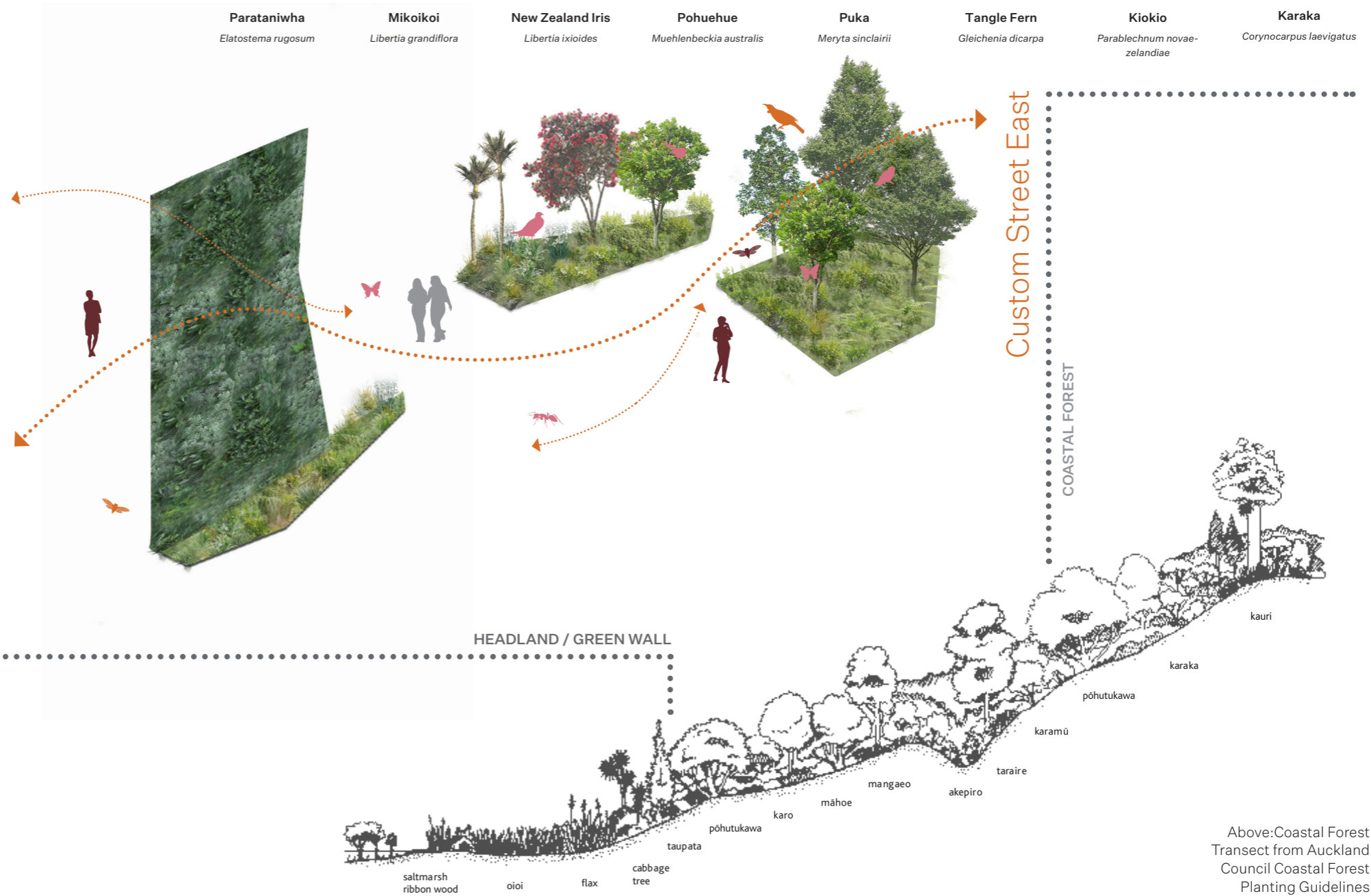
All planting to be drip irrigated.



Above: Coastal Forest Transect from Auckland Council Coastal Forest Planting Guidelines

2.4 Te Urunga Hau / The Urban Room

Planting Strategy



Above: Coastal Forest Transect from Auckland Council Coastal Forest Planting Guidelines

2.5 Pedestrian Laneways

For reference, the following sections represent the key public realm pedestrian laneways and proposed dimensions.

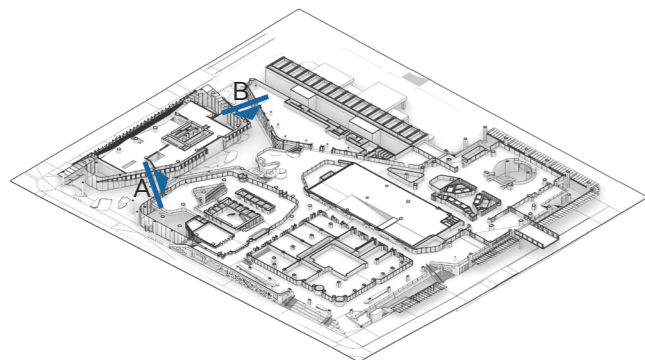
A - South West Laneway (GL)



B - North West Laneway (GL)



Further Detail:
Refer to Document A (Architecture and Landscape Drawings) for further detail including dimensioned sections



2.5 Pedestrian Laneways

For reference, the following sections represent the key public realm pedestrian laneways and proposed dimensions.

C - Eastern Lane (L01)

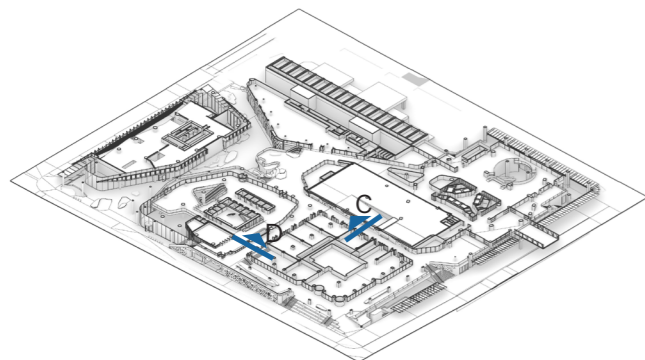


D - Southern Laneway 'Eat-Street' (L01)



Further Detail:

Refer to Document A (Architecture and Landscape Drawings) for further detail including dimensioned sections



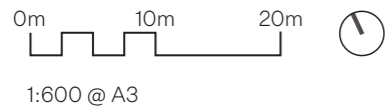
2.6 Universal Design

Access is provided via level or sloping routes, accessible ramps and stairs from street as well as direct access from Commercial Bay at podium level via the HSBC bridge connection. Through site connections are further supported by an accessible lift prominently located at the base of the main stair between Te Urunga Hau and the AON Podium. An alternative escalator connection is also provided to navigate the approx. 4m level change that occurs across the block.

Building access is provided flush from the public realm or podium with the exception of P2 access from Lower Hobson Street where accessible steps and ramps are provided to meet flood level constraints.

Publicly accessible toilets are provided within the HSBC podium level easily accessible from Te Urunga Hau.

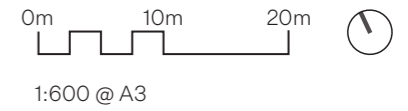
Furniture placement and planting in conjunction with unobstructed building frontages supports legible access and circulation.



- Steps / Escalator
- Ramp / Slope
- Ground Level 3.9
- Ground Level 4.5
- Ground Level 8.7
- Ground Level 9.5
- Accessible Lift
- Publicly Accessible W/C

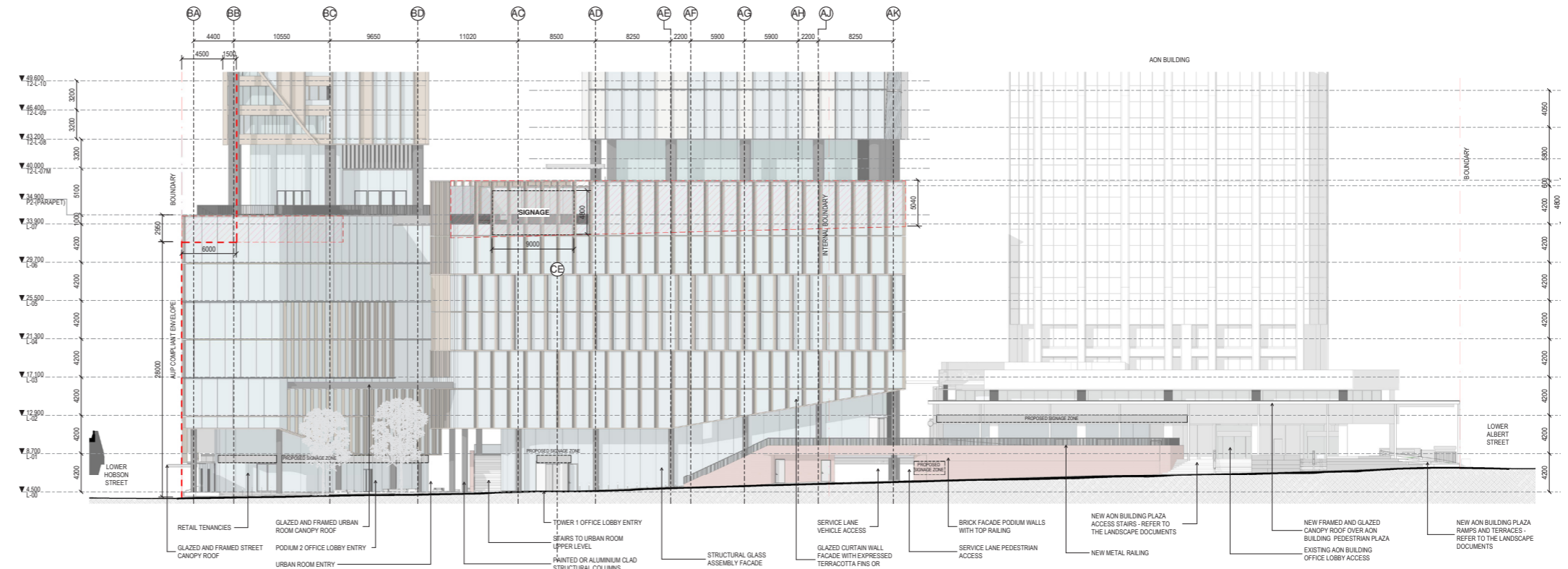


2.7 Streetscapes

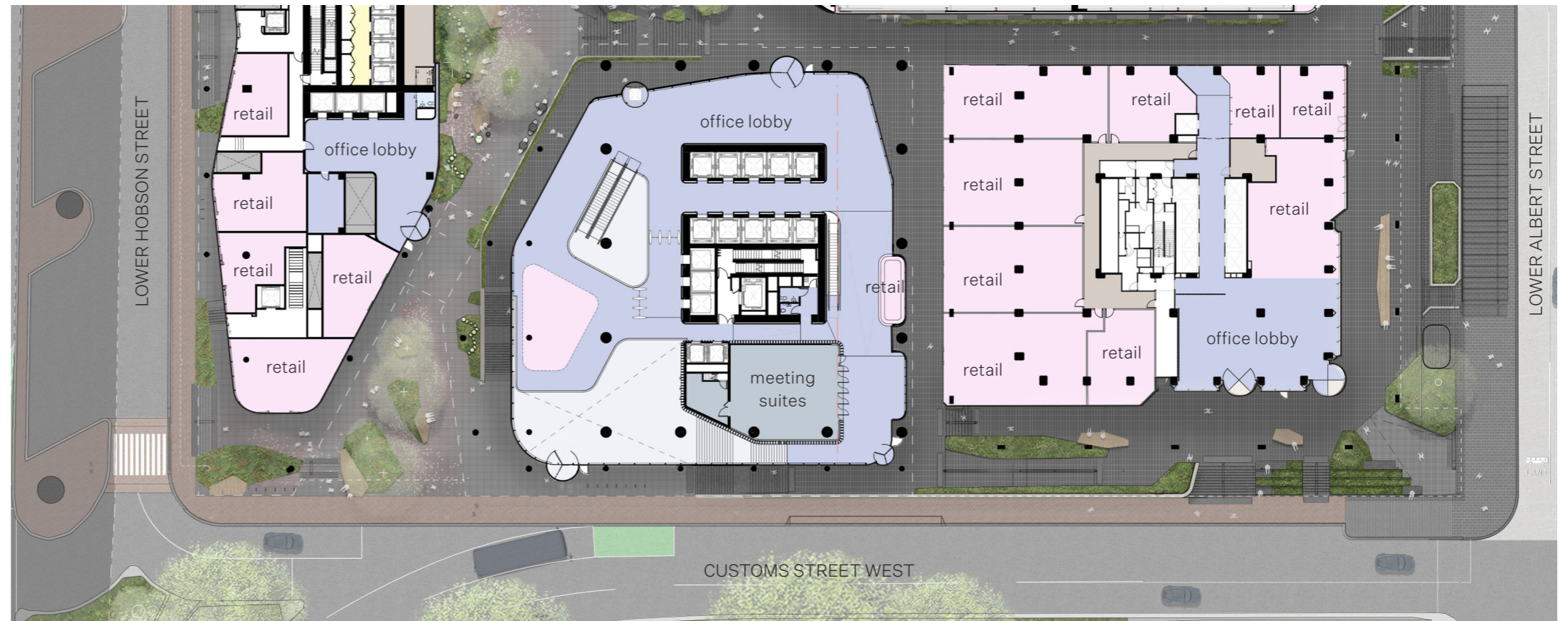
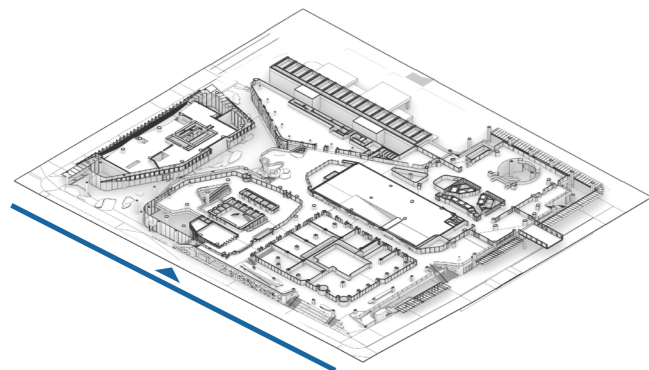


Customs Street West

The following drawings summarise the proposed streetscape outcomes along Customs Street West.

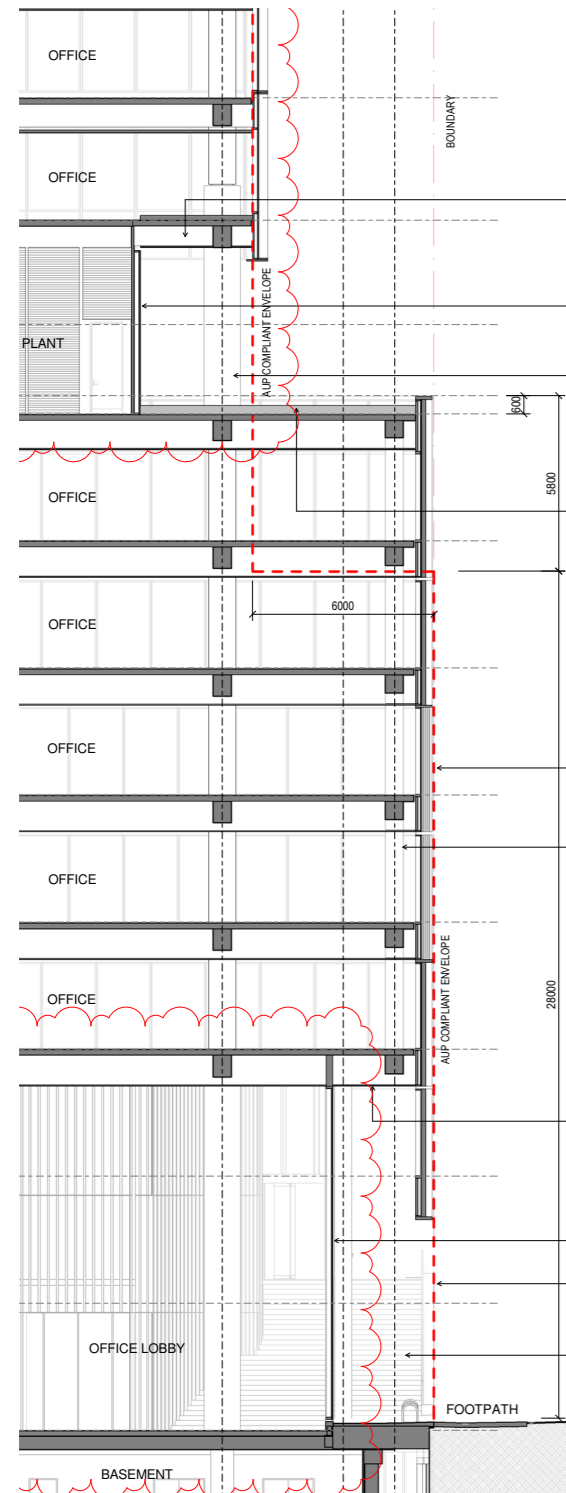


Further Detail:
Refer to Document A (Architecture and Landscape Drawings) for further detail including dimensioned sections



2.7 Streetscapes

Customs Street West



Right:

Model view showing the street facing office lobby and the service lane entrance.



Right:

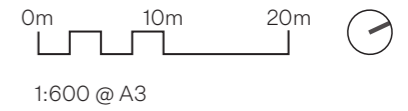
Model view showing the street facing office lobby and retail activating Customs Street West.



Left:

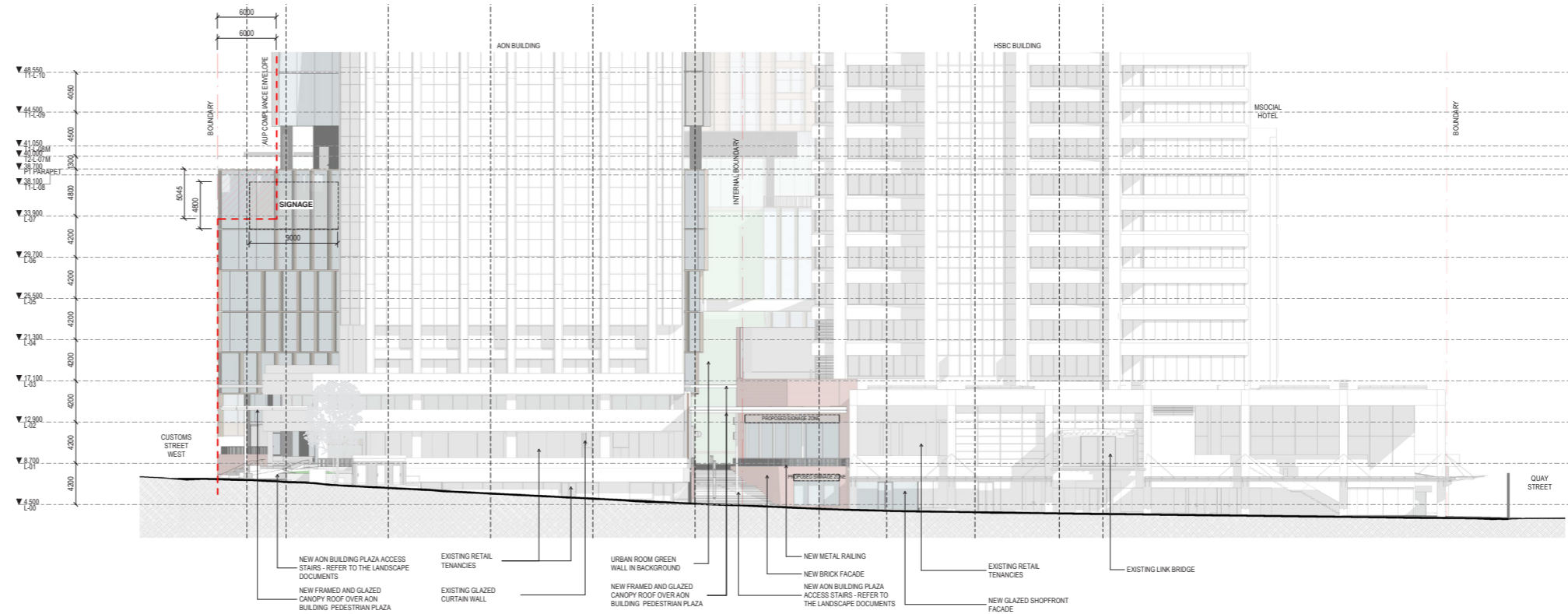
Detail section demonstrating streetscape relationships (1:250 at A3).

2.7 Streetscapes



Lower Albert Street

The following drawings summarise the proposed streetscape outcomes along Lower Albert Street.



Further Detail:
Refer to Document A (Architecture and Landscape Drawings) for further detail including dimensioned sections

